

# EIF organisational chart

As of 1st March 2025

# Table of contents

**01** Senior  
Management

---

**02** Finance &  
Strategy  
Office

---

**03** General  
Secretariat

---

**04** Investment  
Office

---

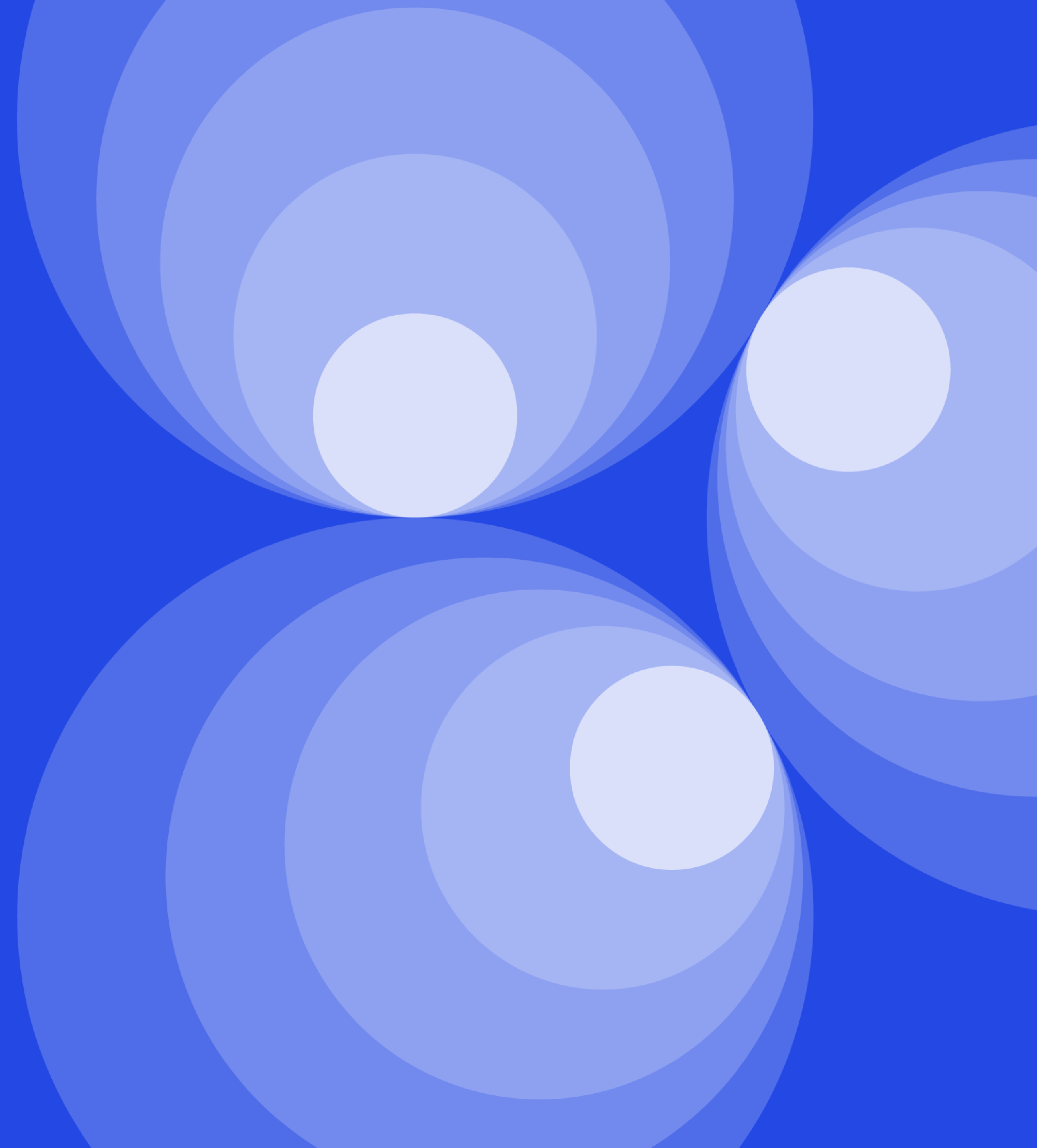
**05** People  
Office

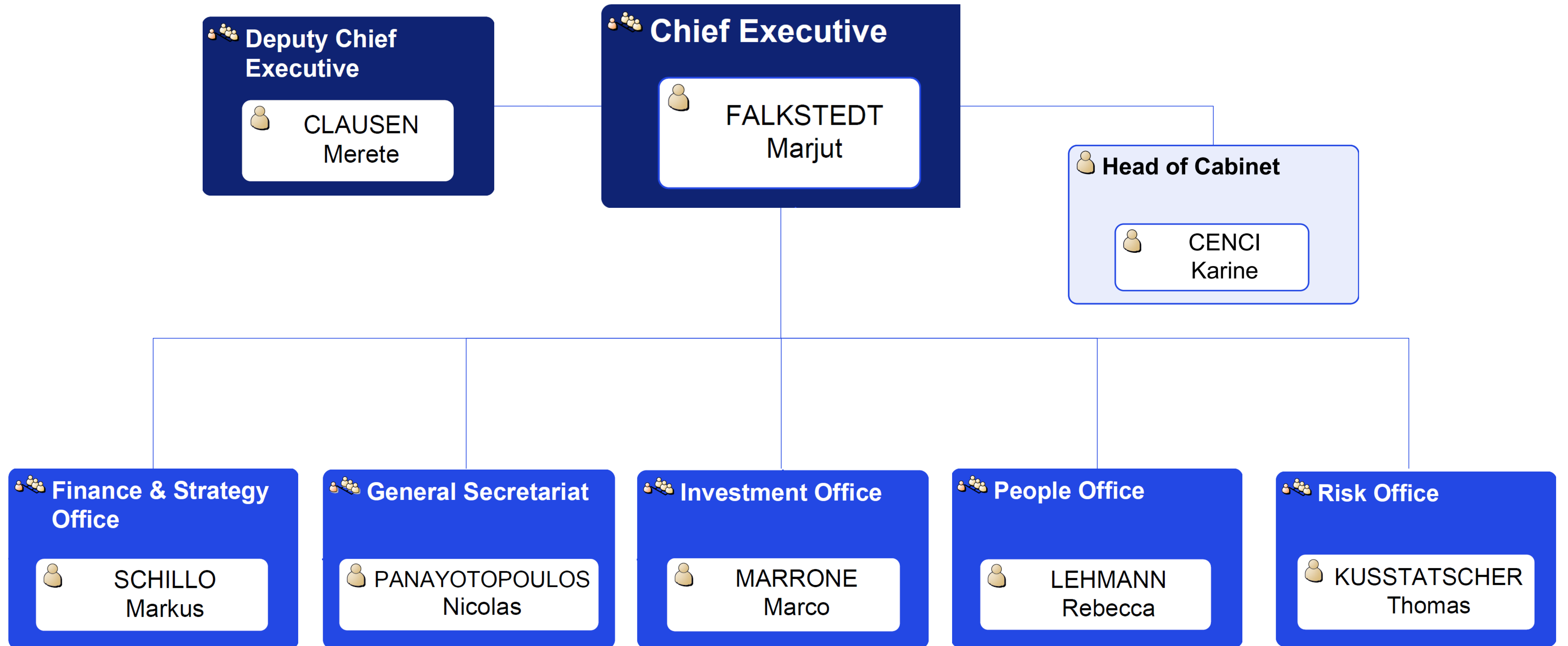
---

**06** Risk  
Office

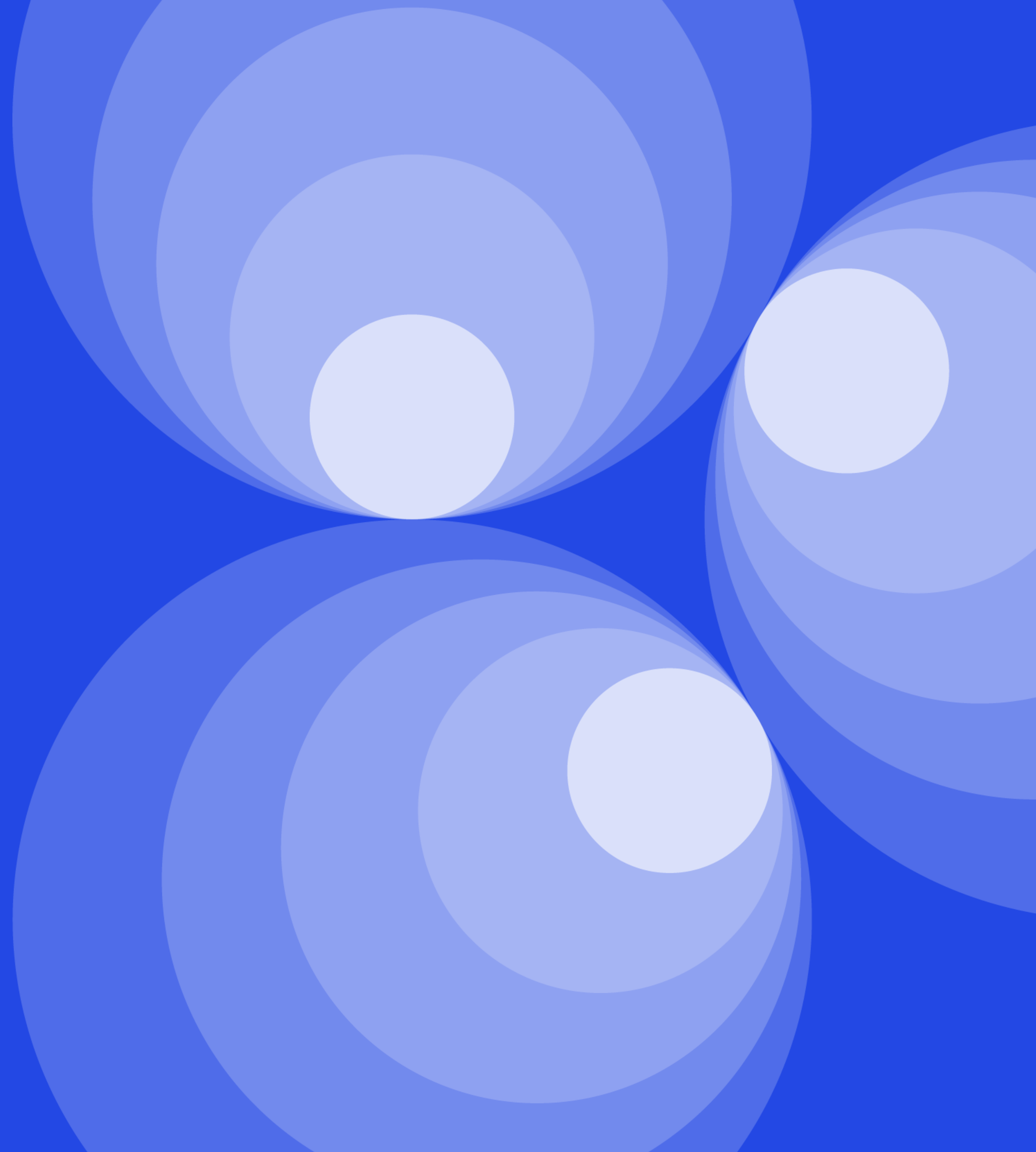
---

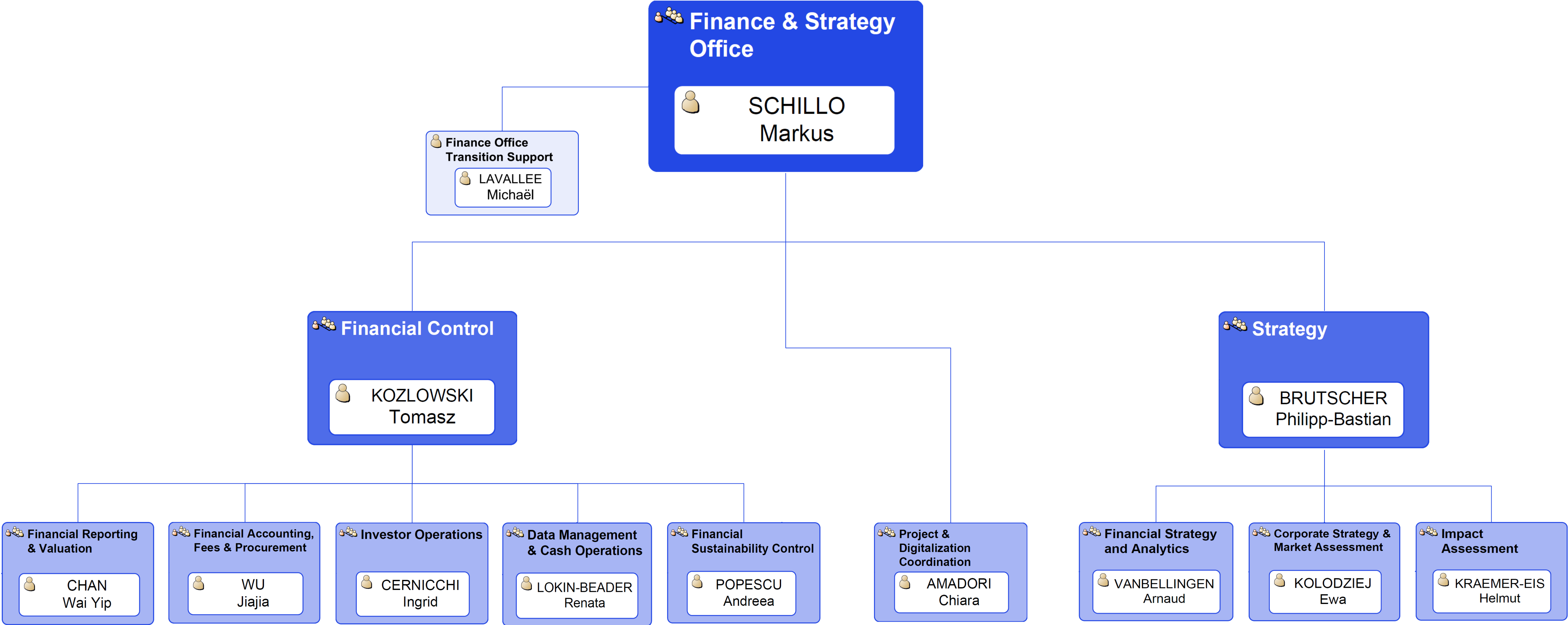
# Senior Management



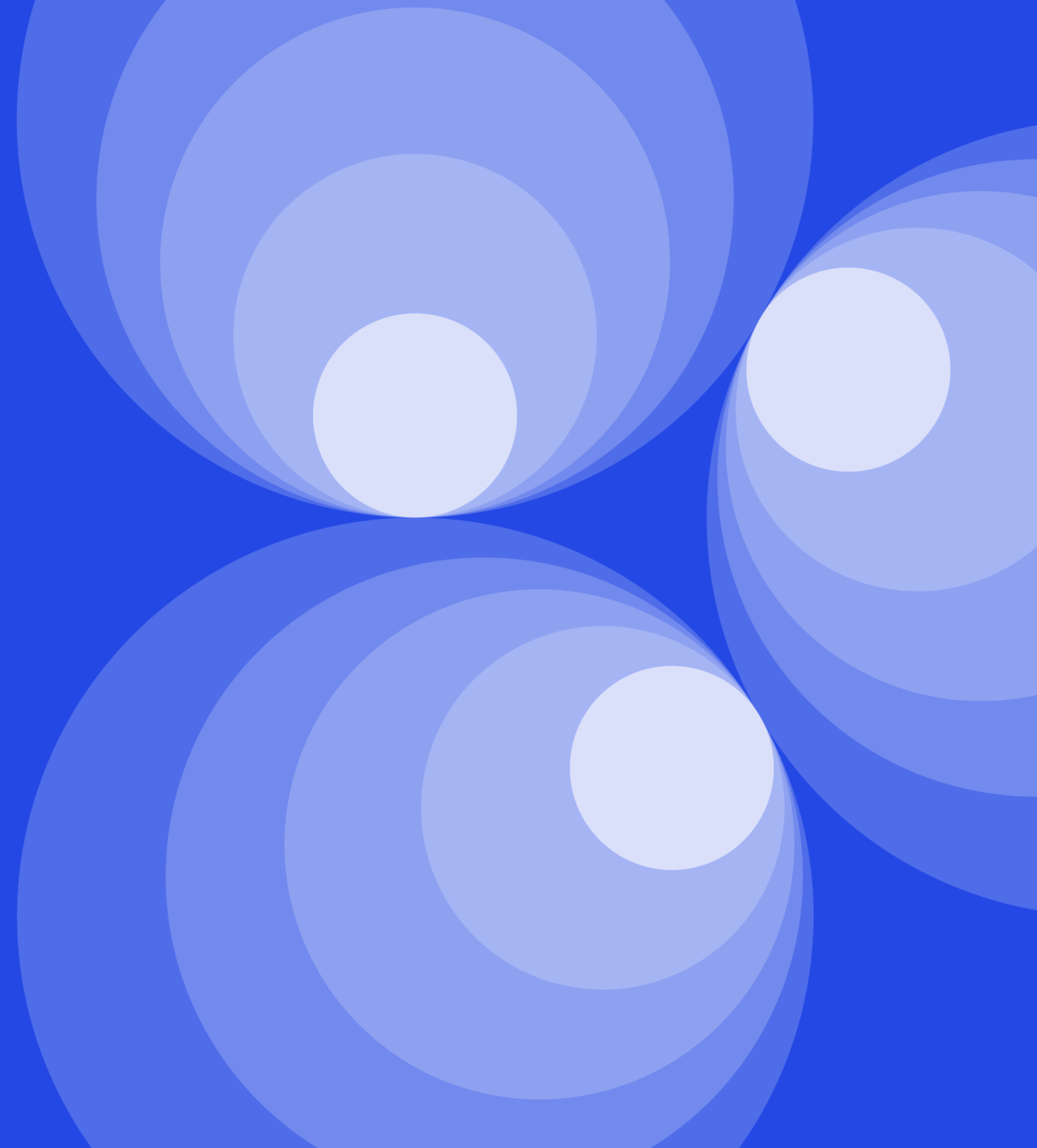


# Finance & Strategy Office





# General Secretariat



**General Secretariat**  
PANAYOTOPOULOS  
Nicolas

**Legal**  
DORIN  
Philippe

**Institutional Relations**

**Institutional Legal Affairs**  
SALES  
Luc

**Debt Operations**  
CLEMENT-GRANDCOURT  
Anne-Laure

**Equity Operations**  
ROBERTI  
Marta

**Governance**  
KAPELIOU  
Melina

**Audit & Institutional Affairs**  
LAMBRI  
Jacopo Andrea

**Marketing**  
MALPAS  
Karen

**Regional Representation**  
ROMANO  
Maria

**Corporate Relations**  
KARIS  
Christa



# Senior Regional Representatives (SRRs)

## Office location

**AMINOFF Juho**  
Helsinki

**BROWN Daragh**  
Copenhagen

**COVELIERS Peter**  
Amsterdam

**DARCY Jacques**  
Paris

**GONZALEZ David**  
Madrid

**MCILWAINE John**  
Rome

**MÜLLER-MARBACH Marcel**  
Berlin

**PASSARIS George**  
Athens

**PRUCHNIK Kamil**  
Warsaw



**BROWN**  
Daragh  
Scandinavia  
& Iceland

**AMINOFF**  
Juho  
Finland &  
Baltics

**COVELIERS**  
Peter  
Benelux

**MÜLLER-  
MARBACH**  
Marcel  
Germany

**PRUCHNIK**  
Kamil  
Poland

**DARCY**  
Jacques  
France,  
Switzerland &  
Liechtenstein

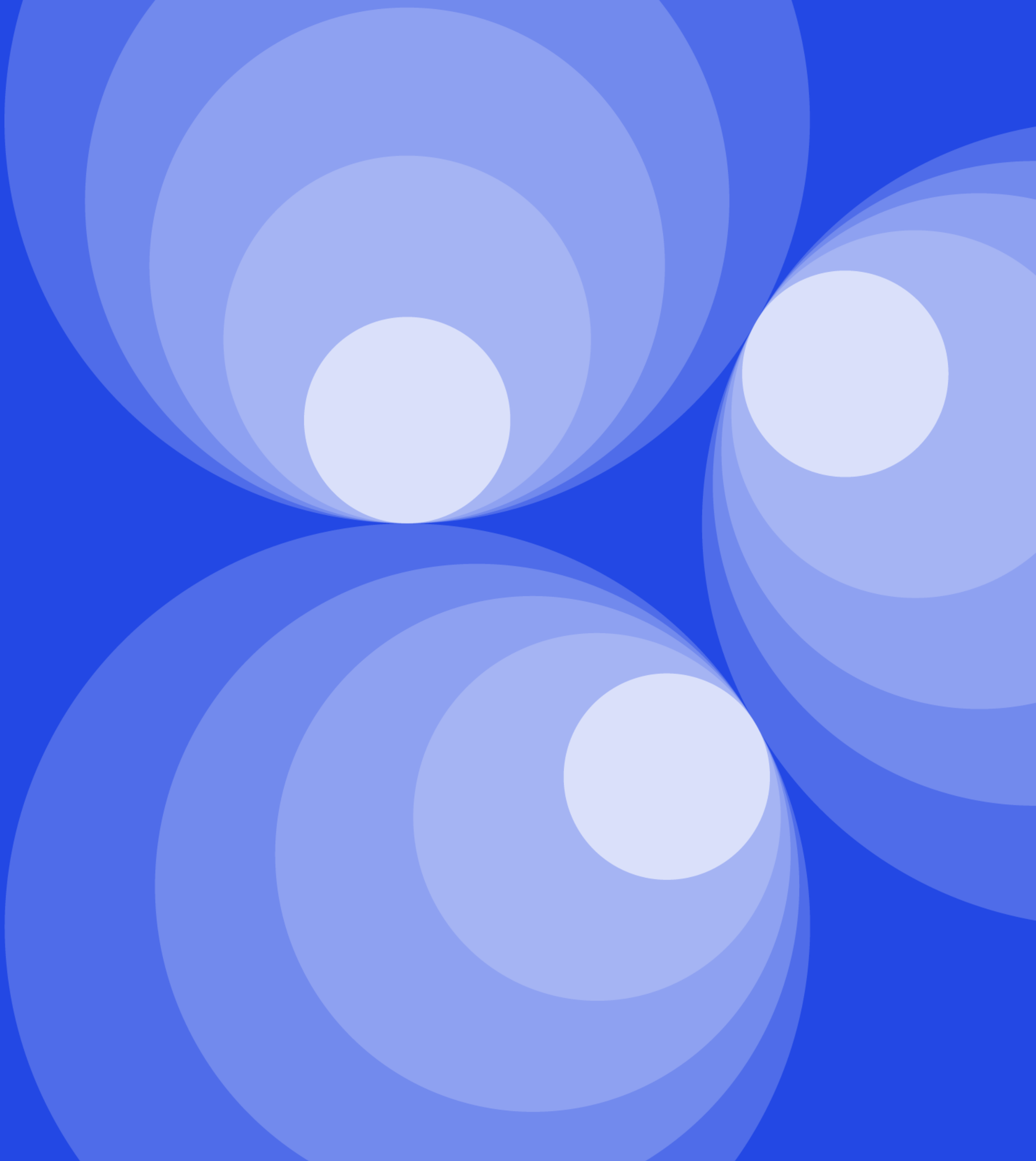
**GONZALEZ**  
David  
Spain &  
Portugal

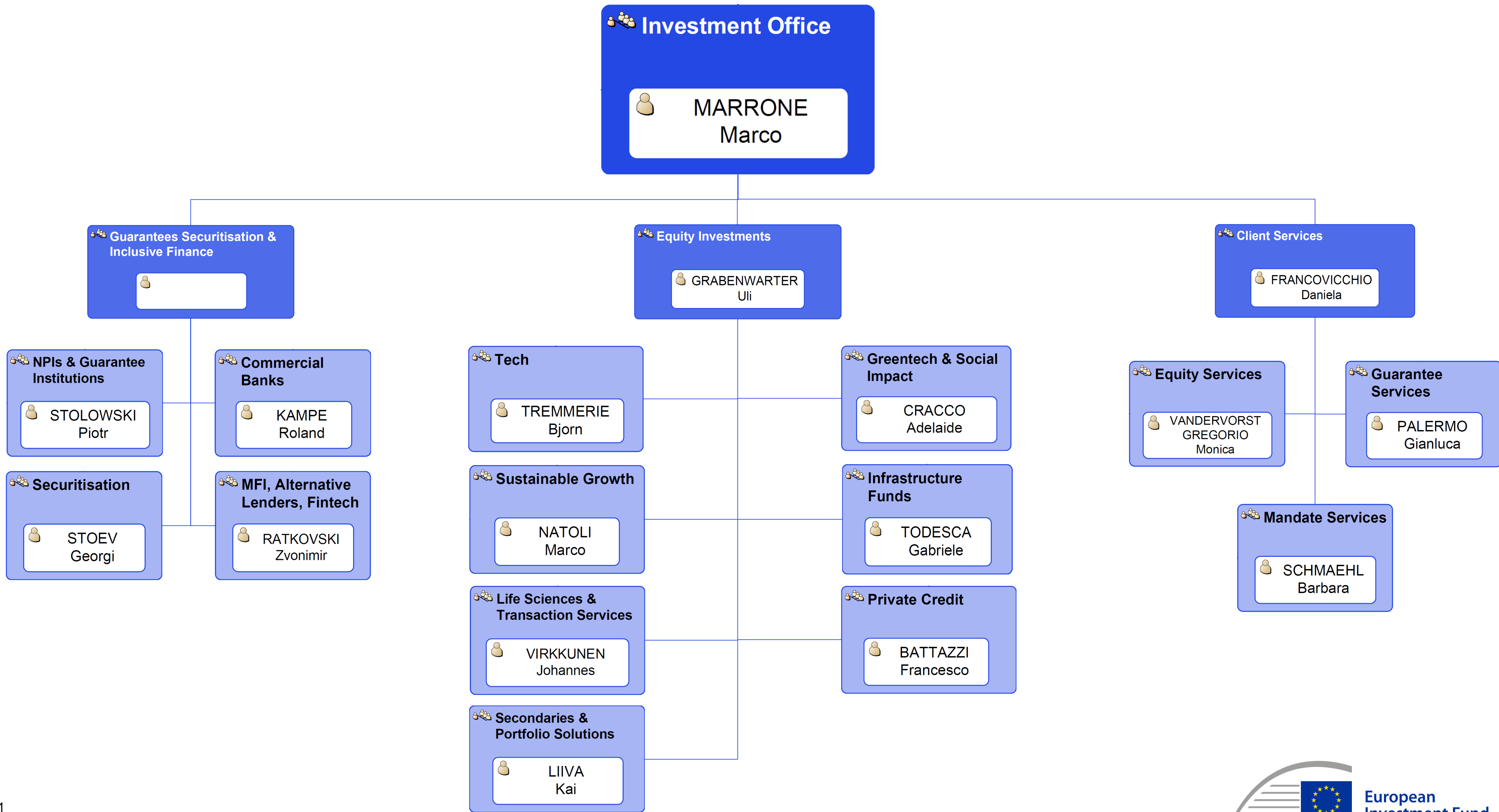
**MCILWAINE**  
John  
Italy&Malta

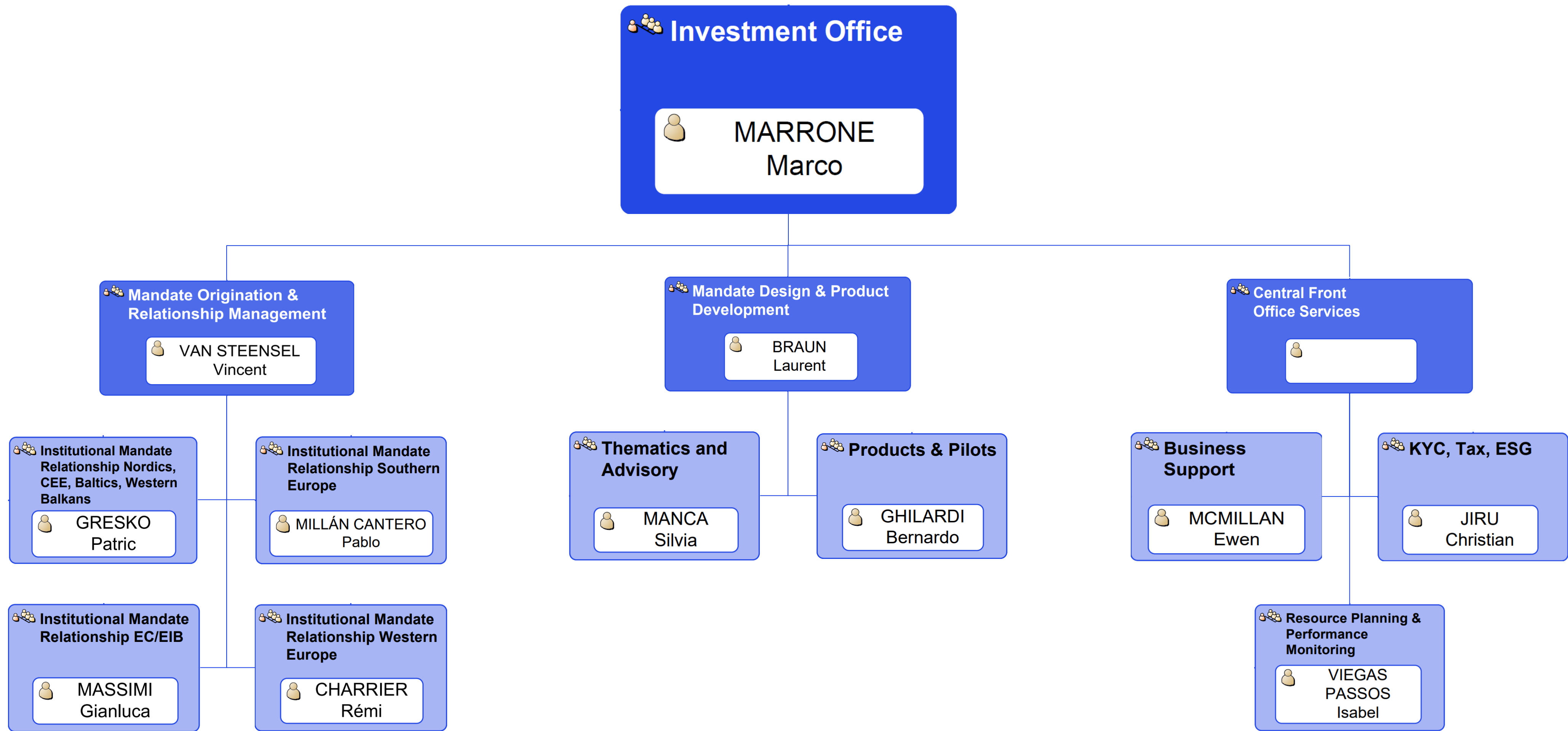
**PASSARIS**  
George  
Greece &  
Cyprus



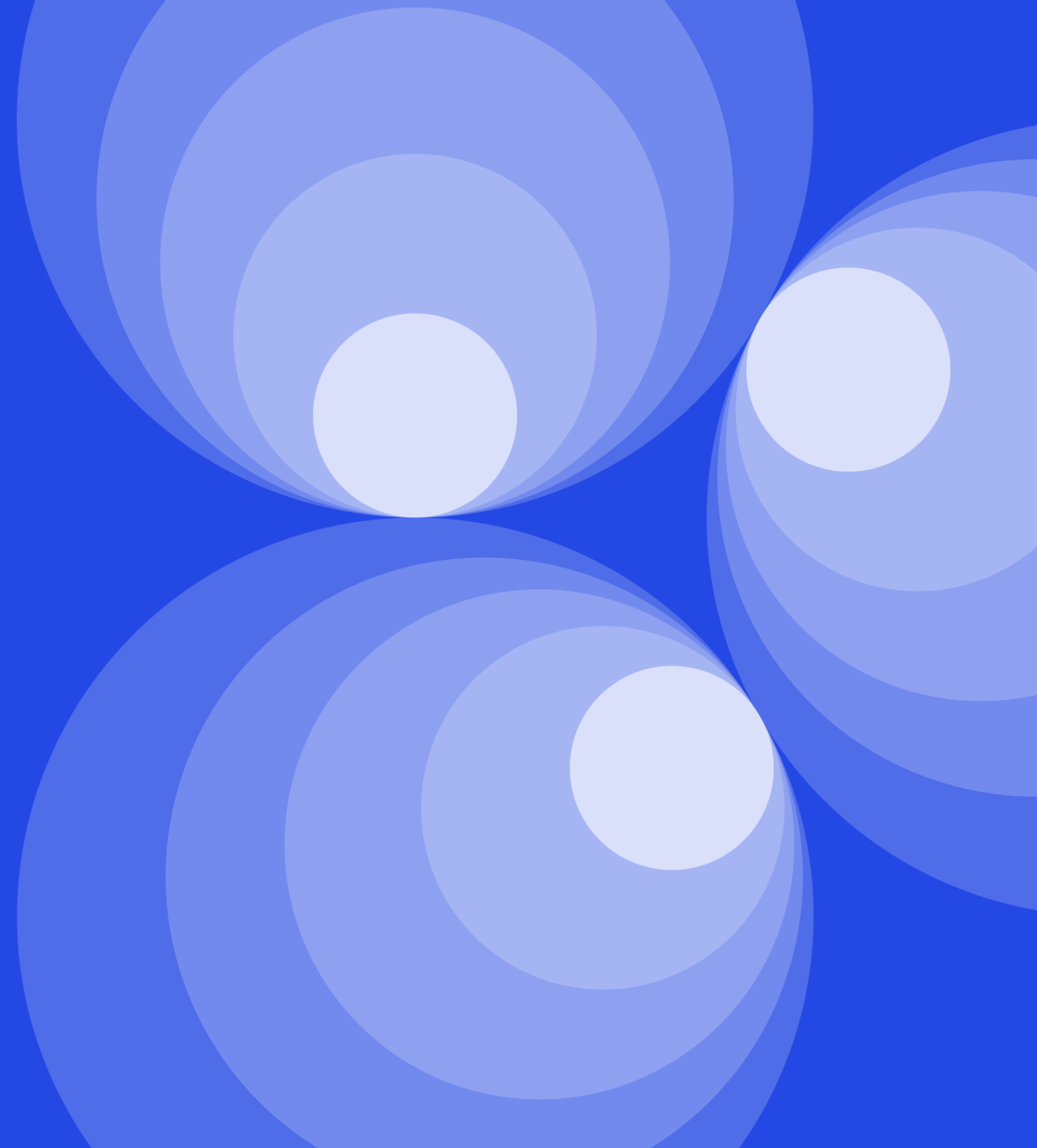
# Investment Office

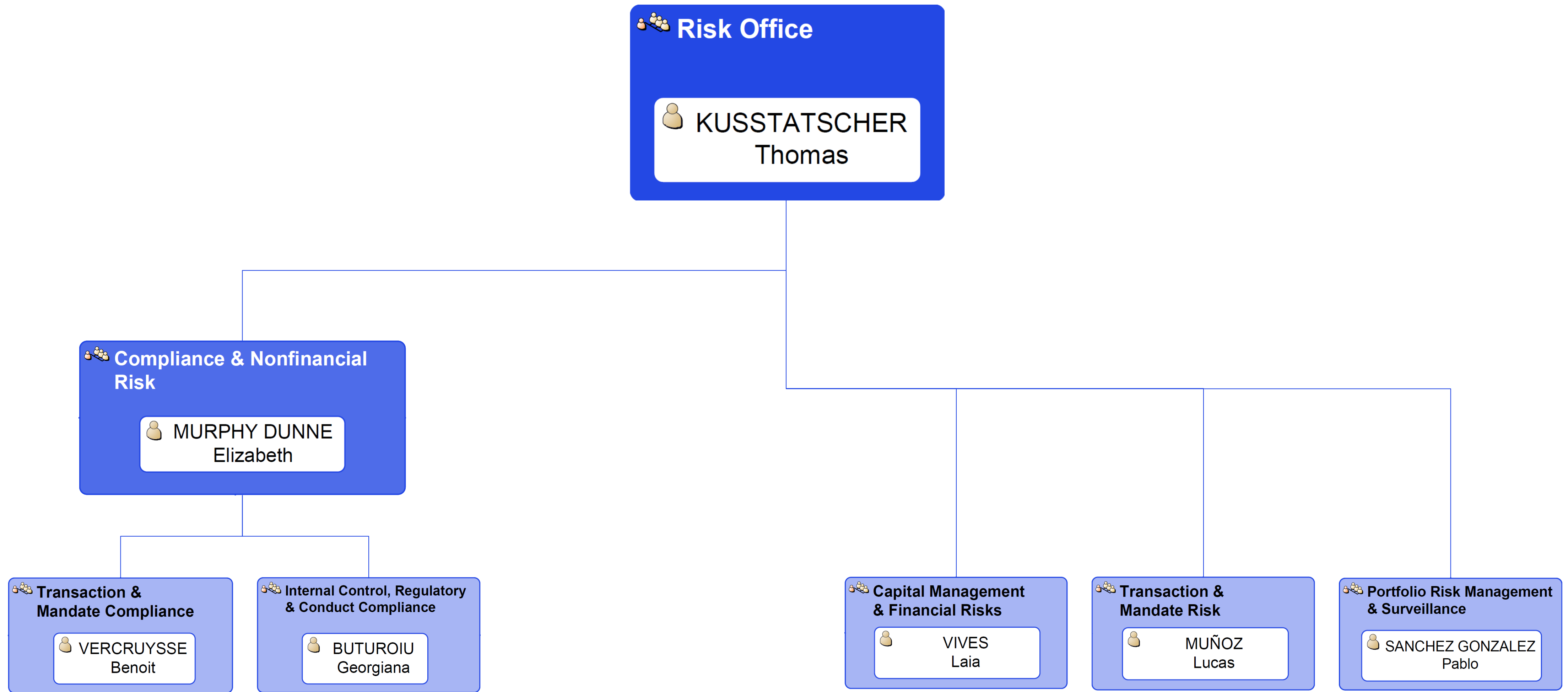




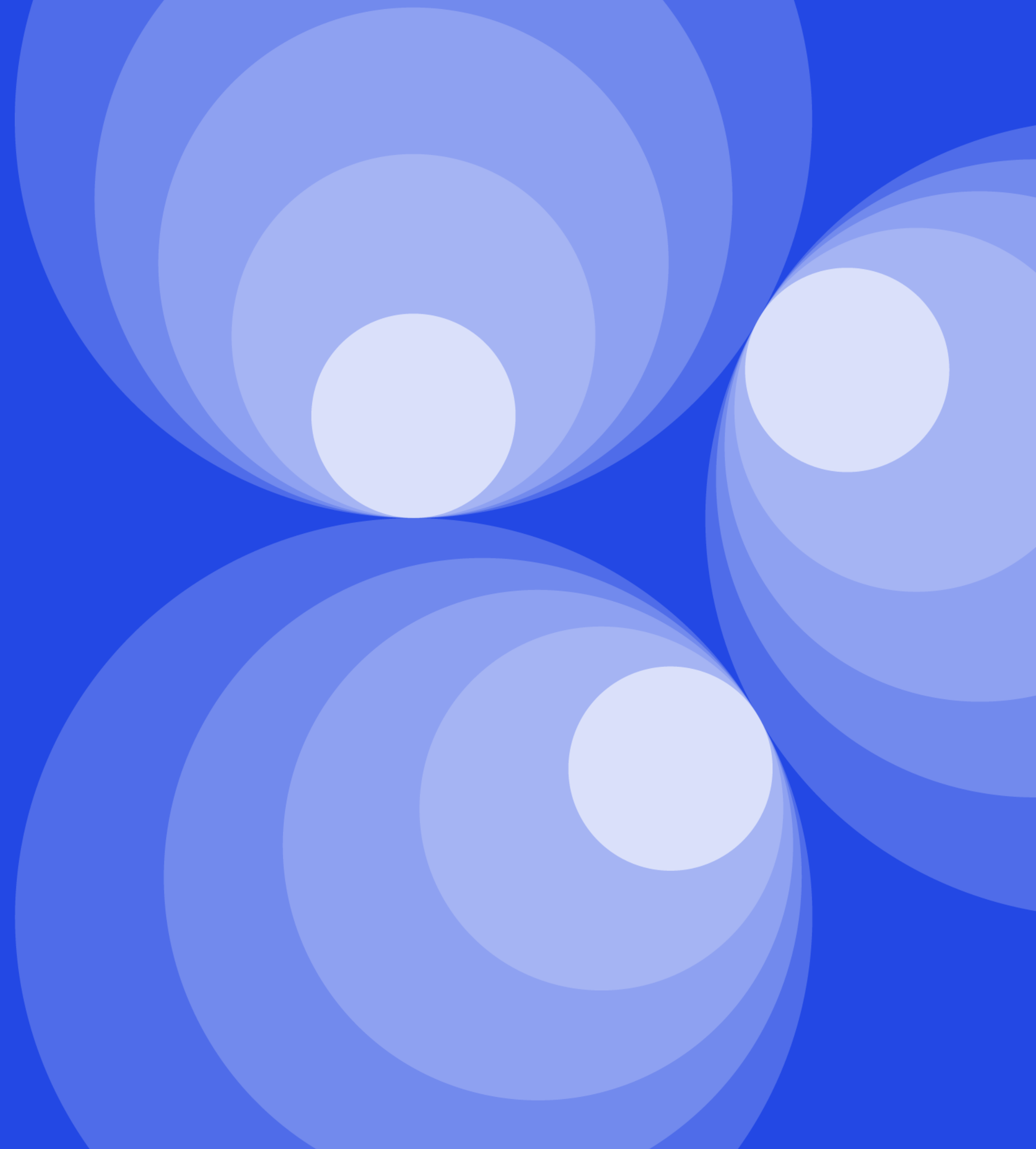


# Risk Office

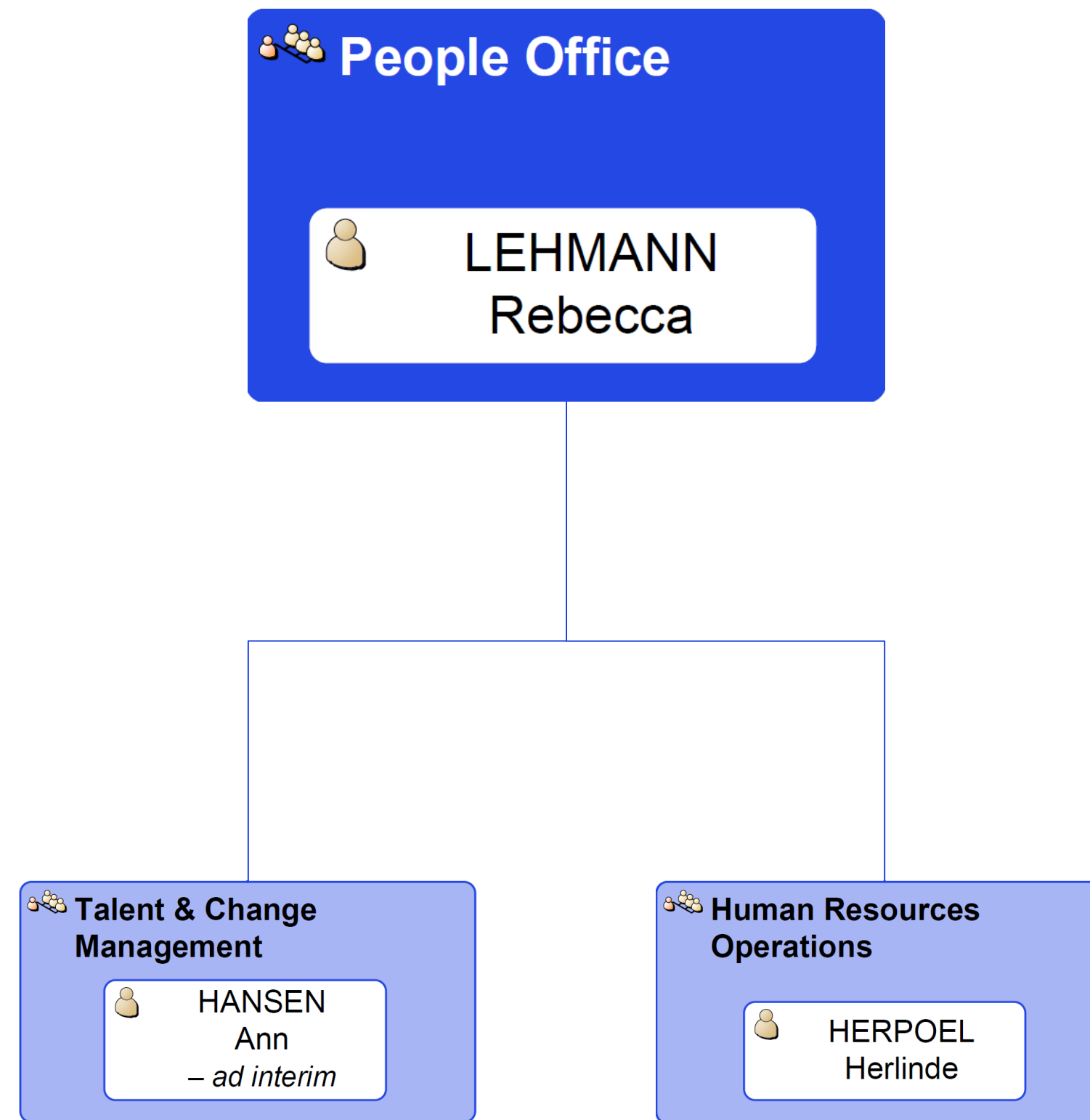




# People Office

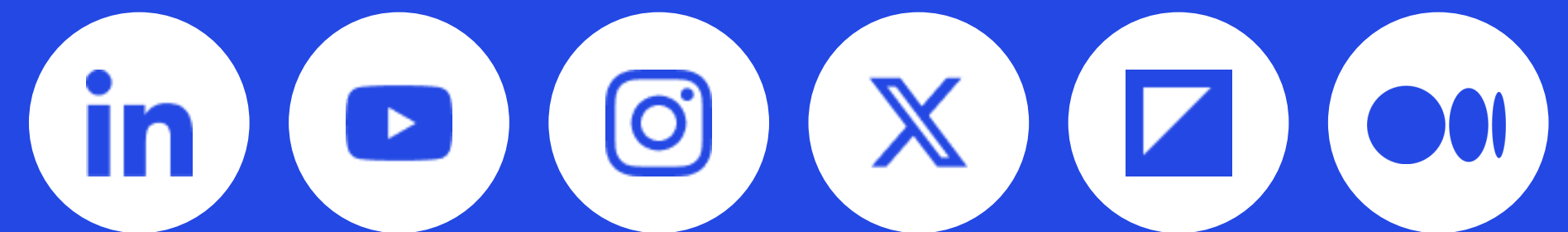








# Follow our stories and work



---

**European  
Investment Fund**  
37B avenue J.F.  
Kennedy

L-2968 Luxembourg  
Phone: +352 24851

